

## VIDEO DOMAIN's NetEye DVR

# DATA SHEET

Video Domain's **NetEye DVR** is an advanced stand-alone MPEG-4 Digital Video Recorder (DVR). The **NetEye DVR** has up to 16 Video Inputs, Video Motion Detection (VMD), storage on local Hard Drives up to 1.6 terabyte, which on an eight camera system amounts to about five months continuous recording., There is a CD Writer for backup and an easy-to-use software interface.

The recorded events can be viewed directly from the unit on an External video monitor or PC screen. The streaming video can be monitored remotely over LAN and ADSL/CABLE connection.

The **NetEye DVR** is supplied with easy-to-use client software and supports simultaneous multi-user access using Internet Explorer as well.

An export utility allows easy backup / download of recordings onto CD using the internal CD Writer.

**Evidence recording has never been so easy!**

### Features

- **NetEye DVR** model: Stand-Alone 16ch DVR with internal hard disks.
- Real-time operation system (RTOS)
- Inputs: 16 X video inputs, 16 X Audio inputs (optional), 16 X alarm input.
- Outputs: 1 X audio output, one video output, VGA output, and 6 X alarm outputs.
- Ethernet and RS232 connections (modem or PTZ camera control).
- On screen display and playback – video-out or VGA
- Simultaneous network operation (multi clients)
- Image compression resolution: 352X288 CIF format, 704X576 4CIF format.
- Video compression: MPEG-4 CBR (fixed frame rate); MPEG-4 VBR (variable frame rate)
- Recording rate: PAL 1 frame/10second - 25f/s for each channel adjustable.
- 6 level image quality selection.
- 16 channels real-time recording, one channel playback.
- Storage: Unit equipped with 4 IDE ports allowing internal expansion to 8 HDD's. Expansion kit available allowing a further 12 HDD's. Option to install CDRW
- Control buttons (setup, play, channels, quad: 1, 4, 16 Channels)



### Recordings

- Record according to daily/weekly scheduler, manual recording, according to video motion detection (VMD) or alarm input.
- 2 recording plans: one for alarm (VMD or external trigger) and one for Lapse.
- Alarm and VMD allow defining how long to record AFTER VMD or Alarm raise.
- 6 recording qualities with style selection: CBR or VBR.
- MPEG mode: PAL 1frame/10 second - 25f/s for each channel adjustable. NTSC 1frame/10 second - 30f/s for each channel adjustable

### Remote Control Unit

Each **NetEye DVR** is equipped with a hand-held remote control unit. The remote control duplicates the **NetEye DVR** front panel operations with the following functions:

- Set IP Address
- Multi-window shifting
- Set Recordings
- Function Assistant
- Enter Menu control
- Direction control
- Jump forwards
- Play last sections
- Jump backwards
- Play next sections
- Slow/Fast play
- Play/Pause



## Setup

The **NetEye DVR** is easy to setup.

You set the **NetEye DVR** configuration parameters in the easy-to-use PC software interface or directly on the DVR with external monitor. The parameters are saved to the **NetEye DVR** internal memory.

User-set configuration parameters include:

- Triggers: connections, source, action, relays, Video motion detection (VMD), remote control.
- Recording: frame rate, image quality, image format, delays, camera brightness / contrast.
- Scheduler weekly tasks.
- Advanced: IP settings, PTZ, modem connection, user access privileges, time and date.

## Operation

The **NetEye DVR** unit triggers include external contacts and Video Motion Detection.

The **NetEye DVR** can record Lapse recording for all 16 channels and triggered events upon input signal.

The Video quality and frame rate recorded can be controlled

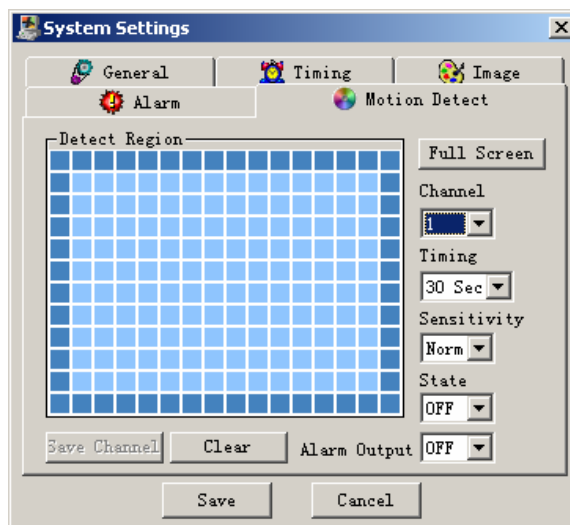
- **Fixed recording:** stops when the hard drive is full.
- **Cyclical recording:** when the hard drive is full, new events are recorded over previous events in First In First Out (FIFO) sequence.

## Network Operation

- Remote real-time monitor
- Pan-tilt control
- Records search and real-time playback (playback quality depends on network performance).
- Backup downloading through network.
- System setting modification and system software upgrading
- Remote alarm process and system log review
- Embedded TCP/IP protocol and operation system supports Web server direct multi-user connection using Internet Explorer.
- Administration mode: Three levels user administration on network; password mode assures authorized user login.
- 16 X video windows surveillance simultaneously at the customer end.



## Video Motion Detection



Video Motion Detection (VMD) is used to trigger **Each NetEye DVR channel** when movement occurs in a specific area of interest. In the easy software interface you can set VMD grid size, active areas and detection sensitivity.

## Scheduler

In the easy software interface you can use the Scheduler to set daily and weekly times at which each video channel will record lapse or optionally activate the Video Motion detection.

## Recordings Playback

Recorded events are retrieved and played back from the hard drives using the easy-to-use PC software. You can also playback these events locally on the external monitor.

## PTZ Control

- Support the pan-tilt-zoom (PTZ) protocol using RS485 communication
- Able to integrate multiple protocols and control various pan-tilt-zoom and speed dome

## Backup

- Support CDRW drive to back up recordings onto CD through one of the IDE ports.
- USB port to back up recordings.
- Download the files from the **NetEye DVR** to local PC through network using the client software.

## Unit Dimensions

<b>Unit Dimensions</b>	2U standard industrial case, 441 (breadth) X 430 (depth) X 89mm (height)
<b>Weight</b>	11KG(Without HDDS)

## Video & Recording

<b>Storage medium</b>	Inside equipped 4 IDE ports, able to install 8 HD inside, expand with external HD case for another 12 HD.
<b>Video Compression</b>	MPEG-4 CBR (fixed frame rate). MPEG-4 VBR (variable frame rate).
<b>Image Compression format</b>	352x288 CIF format 704x576 4CIF format
<b>Image quality</b>	6 selectable qualities
<b>Hard Drive space used</b>	40-460 MB per hour
<b>Recording rates</b>	MPEG mode: PAL 1frame/10 second – 25 fps for each channel adjustable. NTSC 1frame/10 second - 30 fps for each channel adjustable.
<b>Recording options</b>	Fixed - Records events until the HDD is full. Cyclic - Records events continuously overwriting old data when the HDD is full
<b>Image Resolution</b>	Real-time monitor 704x576, Playback 352x288, VGA output 720x576

## Video Connections

<b>TV standard</b>	Colour PAL or NTSC
<b>Video Output (pass-through)</b>	1 x external monitor PAL or NTSC 1 x External PC screen (VGA)

## Terminal Connectors and Switches

<b>Alarm inputs</b>	16 channel voltage alarm input (+5~ +15V D.C. Needed for the alarm input)
<b>Relay outputs</b>	6 channels relay output, (Output in open/close contact)
<b>Alarm Relay</b>	24VDC 1A,220VAC 0.15A (Relay output)



The MemoCam is based on the same award winning technology as the original MemoCam, double winner for innovation and excellence.

## Power Supply

<b>Power</b>	110VAC/220VAC
<b>Power consumption</b>	60W

## Environment

<b>Temperature</b>	-10 to 55 °C
<b>Humidity</b>	< 90% non-condensing
<b>Barometric pressure</b>	86kpa - 106kpa

## PC minimum requirements

<b>CPU</b>	Pentium II 200Mhz or higher
<b>RAM</b>	64 Megabytes or higher
<b>Graphic adapter</b>	Super VGA or higher
<b>Display resolution</b>	640x480, 16 bit or higher
<b>Operating systems</b>	Windows 2000 or Windows XP, Internet Explorer 5.0 or higher.

## Miscellaneous

<b>Processor</b>	AMD ELANSC520/133 embedded microprocessor
<b>Operating System</b>	Real-time operation system (RTOS)
<b>Modem Connection</b>	RS-232
<b>Network Connection</b>	RJ45 10M/100M Ethernet connection
<b>PTZ control</b>	Alarm input and output port, RS232
<b>Backup</b>	CDRW (optional), USB or HD.

V1000000

<b>Head Quarters</b>	<b>USA office</b>	<b>UK office</b>
Video Domain Technologies Ltd.	Video Domain Technologies Inc.	VDT (UK) Ltd.
sales@vdomain.com	sales_us@vdomain.com	sales_uk@vdomain.com

w w w . v d o m a i n . c o m

w w w . m e m o c a m . c o m

August-2004 v1.0



VIDEO DOMAIN

Extending the power of your senses